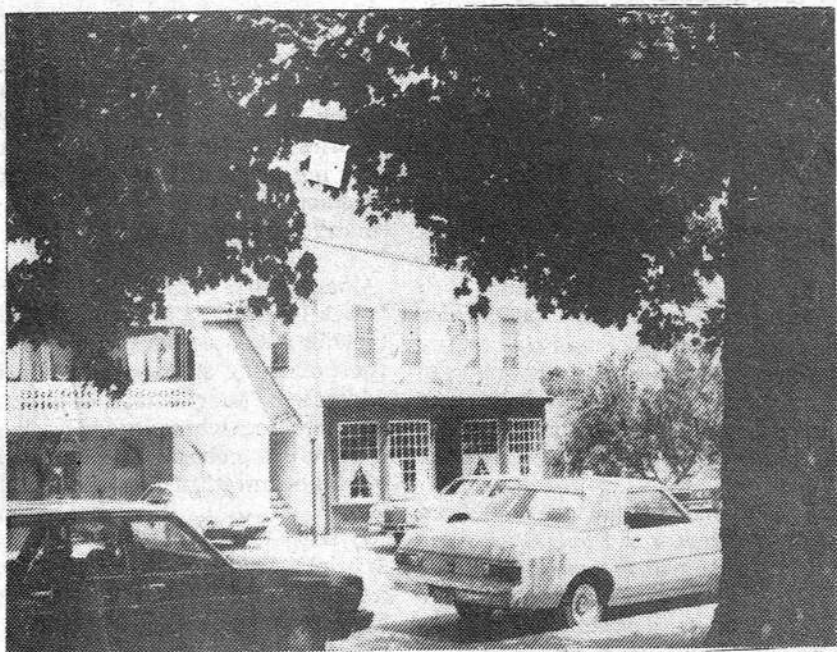


YESTERDAY...an early 1900 scene in Westford Center pictures Wright & Fletcher, a country store, which operated from 1839-1969. Old-timers recall that ribbons, bolts of cloth, and thread were to the left by the front door. On the right were the chicken wire, boots, pails, shovels, bulk seed, barrels and bins. A round iron stove was toward the back near the bookkeeper's desk and his high chair. In those days the grocer came to homes by "hoss" and express wagon, taking orders for oatmeal, sugar, molasses, and other whatnot. The next day they'd deliver fruit and vegetables for groceries. Until 1929 a box of pigeonholes labeled "Post Office U.S.A." tells us the store was the Center's headquarters for daily mail...but only during a Republican administration. To the left, a delivery wagon is backed into the shed to load up groceries; two R.F.D. mail delivery wagons are parked in front, and to the right, children pose beside the old school bus. (From the book WESTFORD RECOLLECTIONS 1729-1979 by June W. Kennedy)



TODAY...many are the changes wrought with time here at the site of Emerson Realty, for years known as the Wright & Fletcher store. The automobile has replaced the horse and buggy, dirt roads are now paved, the store's porch has been converted to bay windows, etc. How many other changes can you detect. It appears that the maple tree to the right of the photo has stood witness to our changing world these past eighty years. (Photo by Jeff Young)

Dec. 18, 1980 Westford Eagle
FEB. 5, 1981, P1