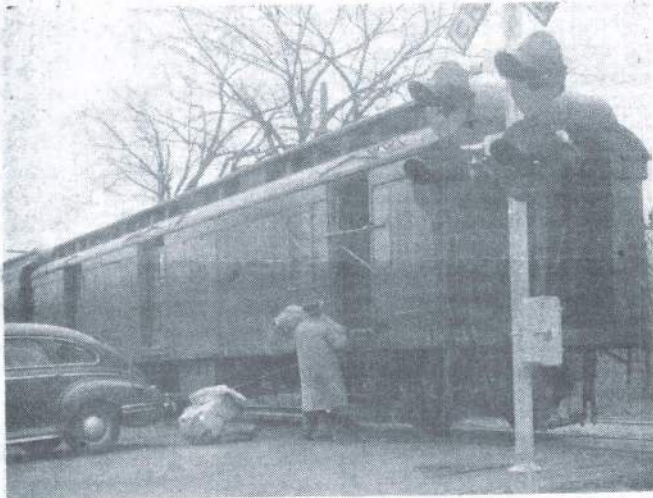




End of an era! Last train pulls away and Mr. Shupe loads last of mail into car for trip to Post Office.
Photo courtesy of A. Wilder



Perry Shupe of Westford loads last mail bags on mail car of eastbound train.
Photo courtesy of A. Wilder



Unloading "Scottish Highlander bull calf" in crate destined to Allister F. MacDougall of Westford.
Photo courtesy of A. Wilder



Morning passenger train arrives Graniteville station.
Photo courtesy of A. Wilder

Westford Recollections

by Mrs. Charles Kennedy
Railroads: End of an Era
Westford was unique in its
hayday of passenger trains,
having no less than 8
RAILROAD STATIONS within
its limits. They were situated as
follows: (1) Carlisle Rd. - Old
Colony and New Haven (2) East
Littleton - below Kimballs - on
Route 110 (3) Pine Ridge Station -
now garage and barn for Mr.

Edward Green (4) West
Graniteville - Opposite St.
Catherine's (5) Stoney Brook
(6) Forge Village (7) Westford
Depot (8) Brookside.

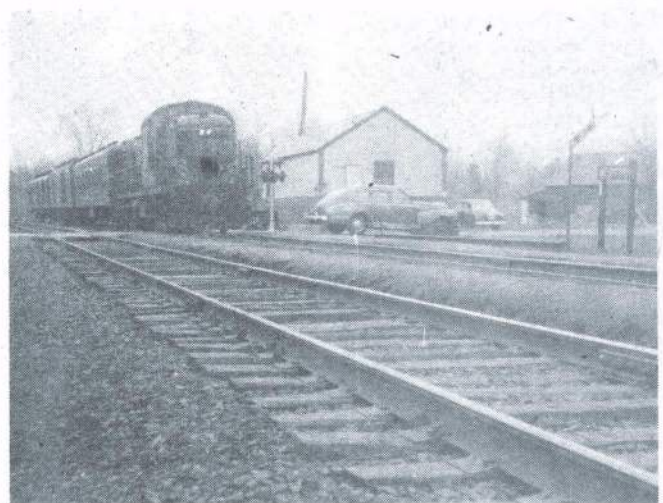
There were two morning
trains from Westford Depot to
Lowell - a twenty minute drive.
The train was a great com-
petitor of the trolley which
necessitated so many changes
and waiting periods that it

resulted in a 70 minute ride to
Lowell from Westford.

Allister MacDougall was
involved in the last week of
railroad transportation at
Graniteville. He had arranged
to have a Scottish Highlander
Bull calf shipped in from
Dakota and Mr. Arnold Wilder,
railroad enthusiast, was on
hand to snap a photo.

On the very last day of local

service, Perry Shupe, the last of
a number of men who carried
mail from the Post Office and
back two times a day was
photographed. Perry Shupe
lived on Boston Road, where Dr.
Lawton now resides.



Last eastbound local train - Worcester to Lowell to
stop at Westford arrives at Westford Depot (Note
no passengers waiting - only mail to be dispatched.)
Photo courtesy of A. Wilder