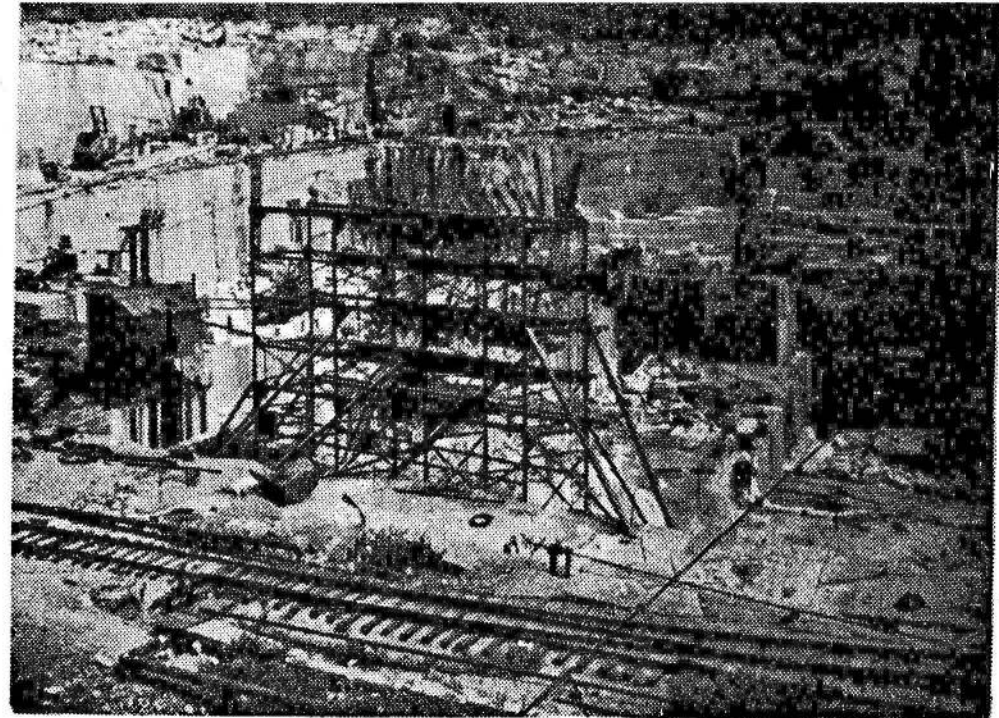


Traveling salesmen, with sample trunks, periodically visited the local stores and took orders for grocery and related items. Shortly thereafter, the southbound local would unload cases, barrels and bundles for pick-up via horse-drawn teams. Blodgett's Store in Graniteville was one of those stores. Photo taken in 1900. (A Day photo from the WESTFORD RECOLLECTIONS Series)



In 1895, H. E. Fletcher Quarry constructed a standard gauge railroad as a more competitive and sophisticated means of granite transportation. It continues in use to the present time. (A Wilder photo from the WESTFORD RECOLLECTIONS Series)