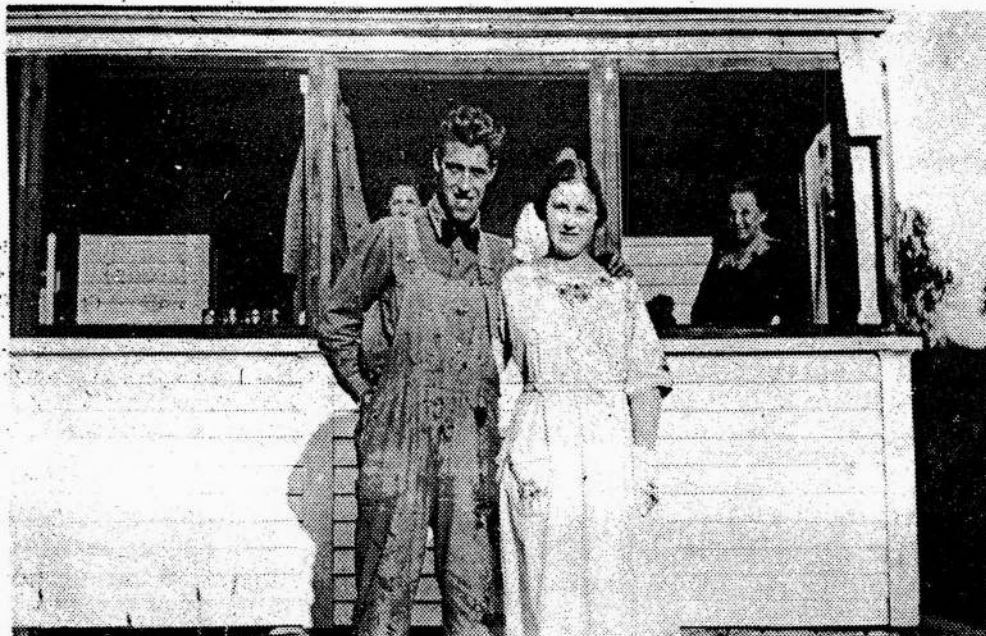


Westford Recollections

by June W. Kennedy

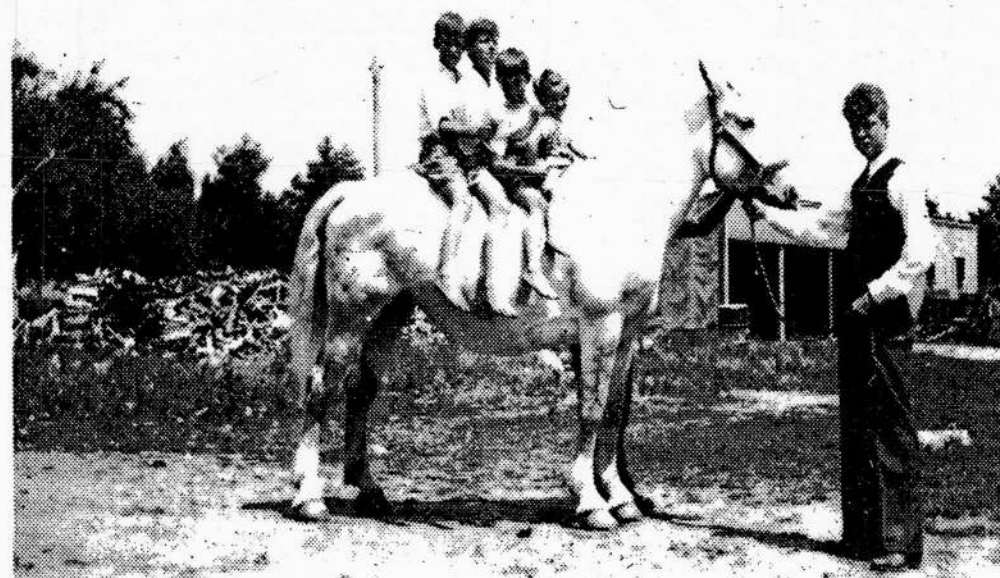
Westford Recollections 250th Anniversary Series with Article No. 6 "Life on the Fletcher Farm."



In 1920, in their early married life, Walter and Grace Fletcher felt that there would be no place like a farm to bring up a family. Today, in 1979, son George operates the old farm boasting a herd of over 200 cattle. It is the last large dairy farm in the town of Westford. (A Fletcher photo from the WESTFORD RECOLLECTIONS Series)



"I would have the Grange come down and we'd have whist parties - sometimes 12 tables. Then we'd have dancing in the kitchen," recalls Grace Fletcher of the early 1930's down at the farm on Plain Rd. where she and her husband, Walter, raised their family. (A Fletcher photo from the WESTFORD RECOLLECTIONS Series)



"It wasn't all hard work. We took time to enjoy life too," reflects Grace Fletcher. Featured from left to right on the horse are: Rowland, Willard, Walter Jr. and Charlotte Fletcher, with George A. Hardy, cousin, standing. The photo was taken about 1933. (A Fletcher photo from the WESTFORD RECOLLECTIONS Series)



There was always something to do on the farm. This 1944 photo shows Walter Fletcher, Sr. atop the load of hay. His daughter, Barbara, is astride the horse. (A Fletcher photo from the WESTFORD RECOLLECTIONS Series)