

Westford Recollections Through the Years

WESTFORD RECOLLECTIONS 1729-1979 by June W. Kennedy is a 128-page photo-documentary featuring highlights from the "Westford Recollections" column which appears weekly in the "Eagle." It is a limited edition of 1,000 copies and appears only in hardcover. Featuring approximately 200 photographs, the book spans the 250 year period of the town's history. It is rich in Americana! Bound in old red with gold lettering, WESTFORD RECOLLECTIONS 1729-1979 also sports an attractive dust jacket. The book was printed by the Murray Printing Company of Westford. Copies may be reserved by calling or visiting the

"Book-tique" (692-2347) at 6 Carlisle Place in Westford. Already two-thirds of this edition have been reserved, so hurry! On Saturday, September 22 from 9 a.m. 'til the parade arrives, June Kennedy will highlight and take orders for her book on the lawn of the First Parish Meetinghouse.

****EDITOR'S NOTE** - There has been a slight delay in the publication of WESTFORD RECOLLECTIONS 1729-1979. Please check the September 27 "Westford Eagle" for release date, at which time the large number of customers who pre-ordered will be quickly accommodated.

CHAPTER 2, LAWS OF 1729-30.

AN ACT FOR ERECTING THE WEST PRECINCT IN THE TOWN OF CHELMSFORD INTO A TOWNSHIP BY THE NAME OF WESTFORD.

(DEFINING THE ENTIRE BOUNDARY OF WESTFORD, EXCEPT A PORTION OF THE GROTON-WESTFORD LINE.)

Be it, therefore, enacted * * * That the lands contained in the said precinct as they are hereafter set forth and described, be and hereby are set off and constituted a distinct and separate township by the name of Westford, the bounds of the said township to be as follows: — Beginning at the southeast corner, at a heap of stones, being the bounds between Chelmsford and the said town of Westford; thence running north to a chestnut tree, marked and stones about it; so running on a straight line north to a pine tree, marked, at Col. Tyng's farm; thence westwardly upon Col. Tyng's farm or Dunstable line, to a heap of stones; thence southerly by Groton line till it comes to Littleton land *; then by Littleton land southerly or southeasterly till it come to Concord line; thence easterly on Concord line to the bounds first mentioned; * * *

* See Court Records, September 10, 1730.

[Passed and published September 23, 1729.]

MASSACHUSETTS COURT RECORDS 1727-1730.

ESTATES OF JONAS PRESCOT AND OTHERS SET OFF FROM GROTON TO WESTFORD.

(DEFINING THE GROTON-WESTFORD LINE AND THE LITTLETON-WESTFORD LINE ACROSS FORGE POND.)

A petition of Jonas Prescott, Ebenezer Prescott, Abner Kent and Ebenezer Townsend, inhabitants of the town of Groton, praying that they and their estates contained in the following boundaries, viz: — Beginning at the northwest corner of Stony Brook pond; from thence extending to the northwest corner of Westford, commonly called Tyng's corner, and so bounded southerly by said pond, may be set off to the town of Westford for their greater convenience in attending the public worship.

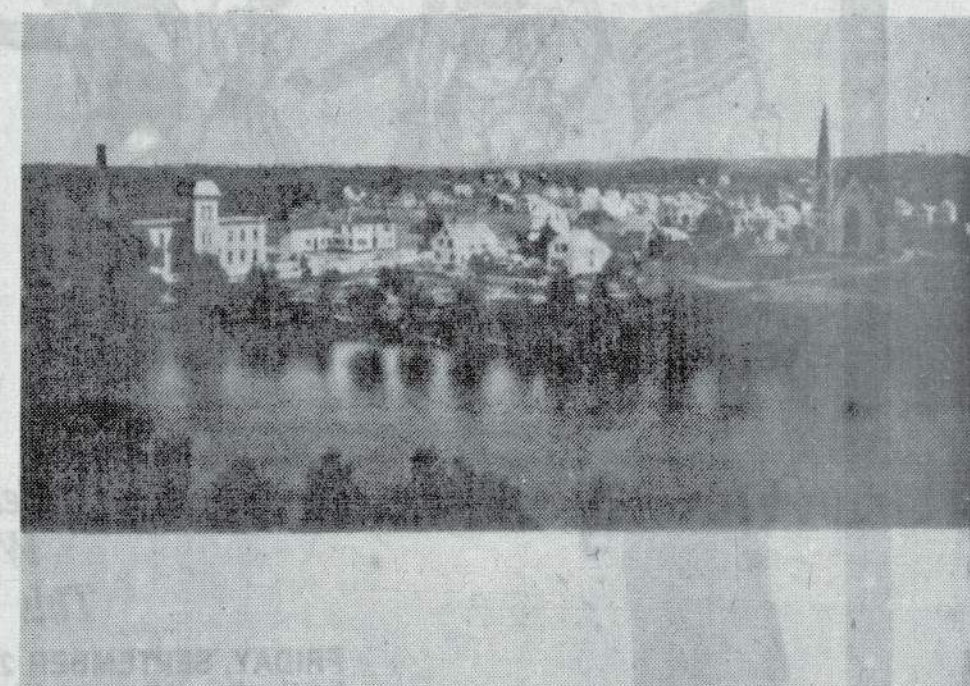
In the House of Representatives, read and ordered that the petitioners within named, with their estates, according to the bounds before recited, be and hereby are to all intents and purposes set off from the town of Groton and annexed to the town of Westford.

In Council read and concurred.

Consented to. — J. BELCHER.

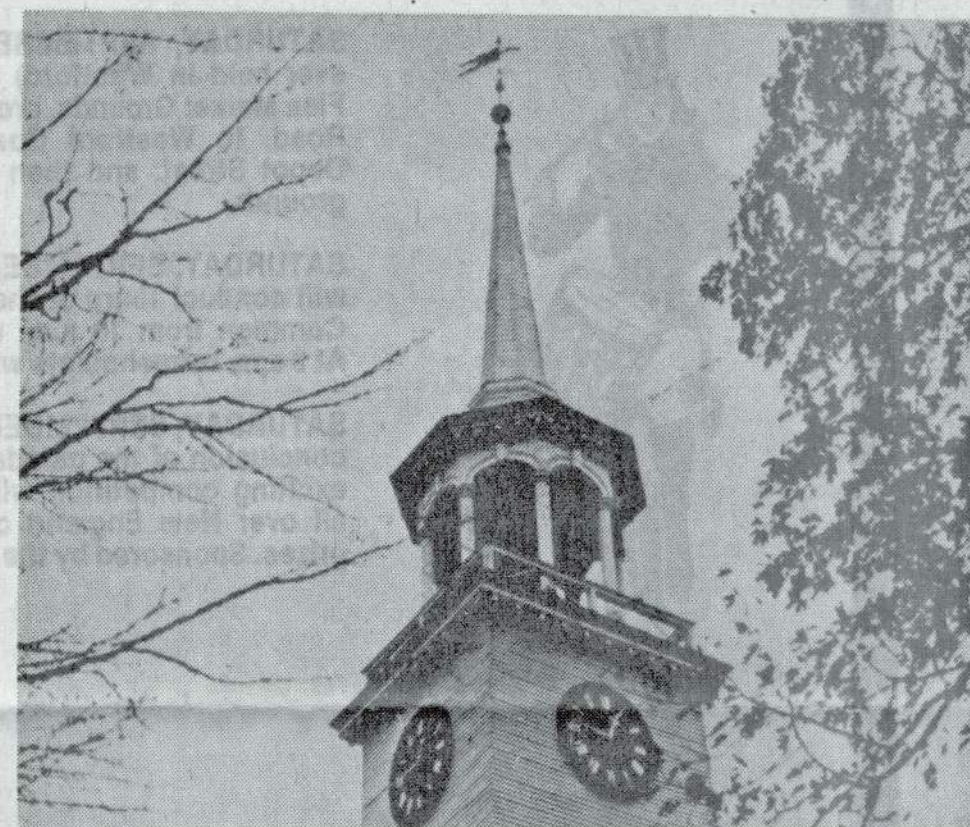
[September 10, 1730.]

CHAPTER 2, ACTS OF 1730.



IN THE 1800'S

Stony Brook. By damming Stony Brook, adequate waterpower was available for the mills all along its picturesque valley. It was here on the mill pond in Graniteville that C. G. Sargent's Sons Corporation had its beginnings in 1854, only six years after the railroad passed through the village of a few houses. By 1880, about sixty buildings, including a church, a school and a depot were added. The village was known as Stone Quarry until about 1856 when it was changed to Graniteville at the suggestion of Mr. Sargent. Photo is an 1882 view of "Graniteville City." (From WESTFORD RECOLLECTIONS 1729-1979)



TODAY... 1979

A is for Anniversary... of human aspirations achieved. It all began here. In 1724, the Massachusetts General Court granted the West Precinct of the town of Chelmsford permission to become a separate religious society. In 1729, it granted the West Precinct a separate "Township" by the name of "Westford." For over a hundred years the town and church were one. First Parish Church United is the third meetinghouse to be built on this property. Traditionally, this historic meeting place was the center of religious, political and social life, giving birth to a town with a grand list of accomplishments worthy to be treasured and shared as we celebrate Westford's 250th Anniversary. (From WESTFORD RECOLLECTIONS 1729-1979, by June W. Kennedy)

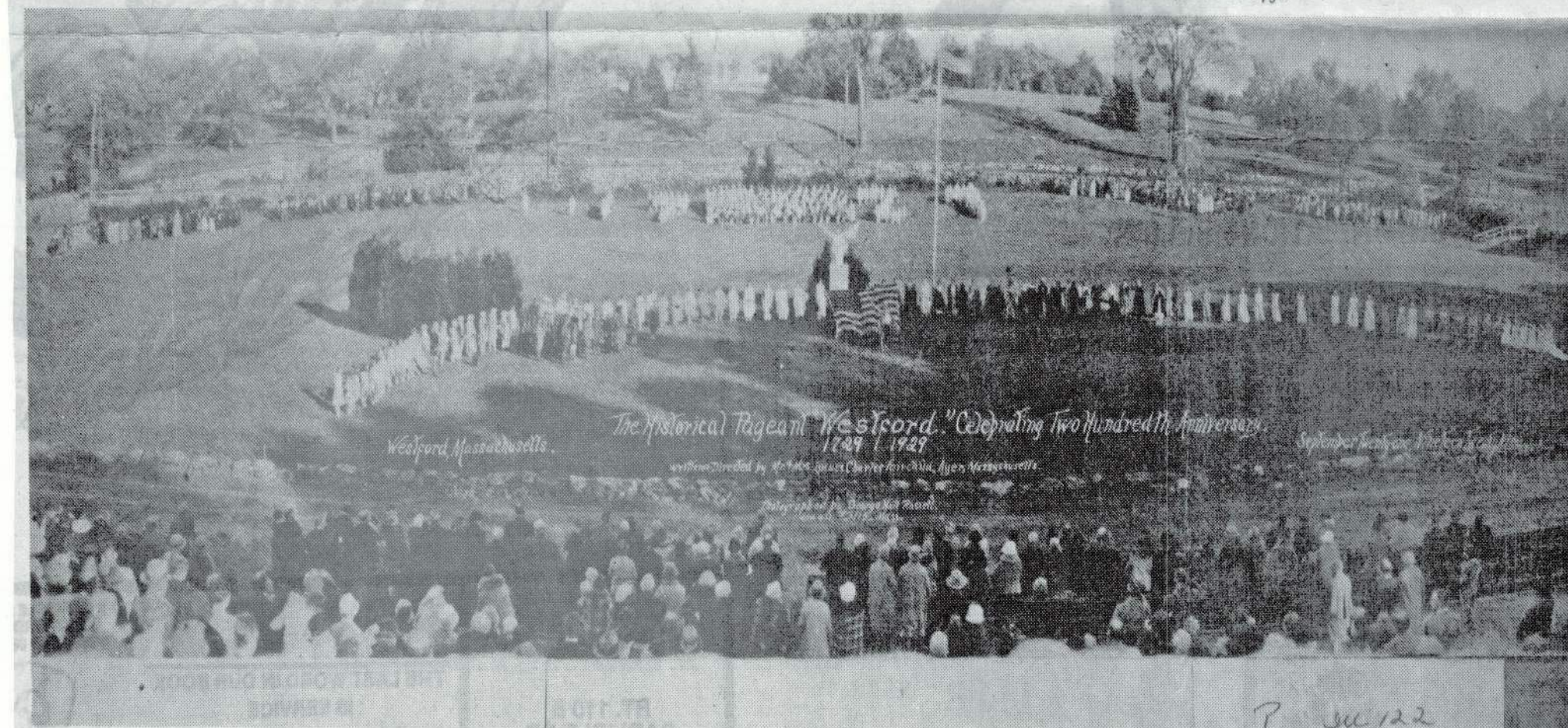
IN THE 1600'S

WE BELONGED TO CHELMSFORD

Hearth and Home. The "Salt Box Farm" on Wright Lane is probably the oldest home in town, circa 1658/9. Its first owner, James Hildreth, was a farmer and Indian fighter, a lieutenant in charge of the Westford Garrison House. The house is architecturally unspoiled. Originally a four-room, central chimney type, the "salt box" (lean-to) was added at an early date. Among the authentic attractions are a built-in corner cupboard, two cooking fireplaces with beehive ovens, and a narrow stairway. A bedroom and hall are entirely wainscoted in the rich tones of original wide feathered boards with the chamber floor boasting twelve boards to cover the width of seventeen feet. (From hardcover limited edition of WESTFORD RECOLLECTIONS 1729-1979, by June W. Kennedy)

IN THE 1700'S

INCORPORATION OF THE TOWN... WE BECOME - SEPTEMBER 23, 1729.



IN THE 1900'S

PAGEANT OF 1929. The historical pageant "Westford," celebrating the town's 200th Anniversary 1729-1929, was held at the base of Prospect Hill. Every period of Westford's

history was dramatized. The costumes were elaborate and the spectators numbered in the thousands. (From WESTFORD RECOLLECTIONS 1729-1979, by June W. Kennedy)