

9-17-1970

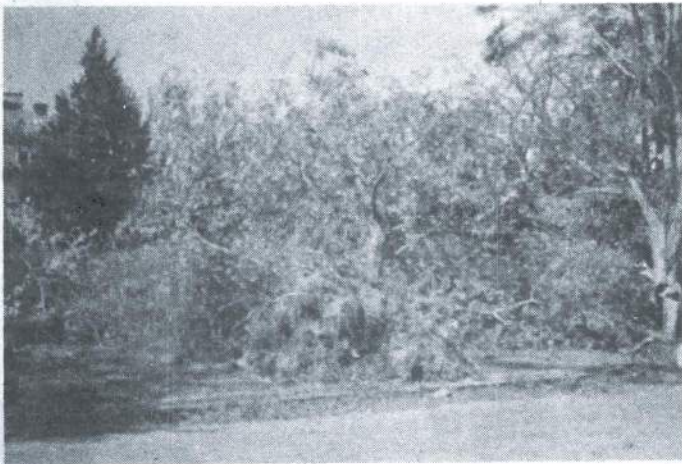
Westford

VOLUME 1, NUMBER 35 9/17/70

THE WESTFORD E

Westford Recollections

by Mrs. Chas. S. Kennedy

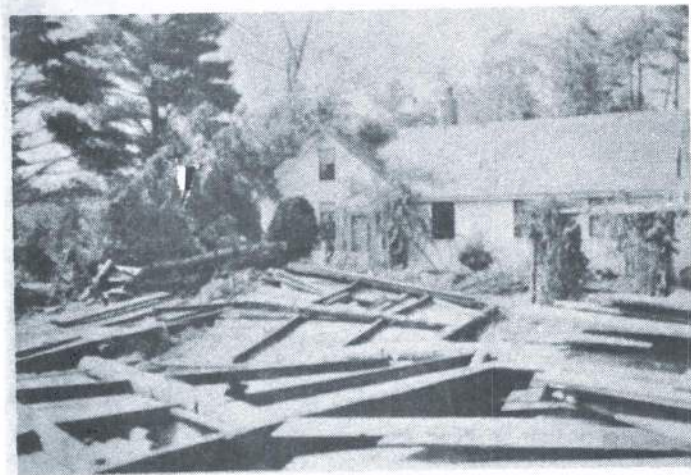


THE OLD JACK ABBOTT House and grounds, after the hurricane. This is now the location of the Center Post Office. (Photo courtesy Mae E. Day)



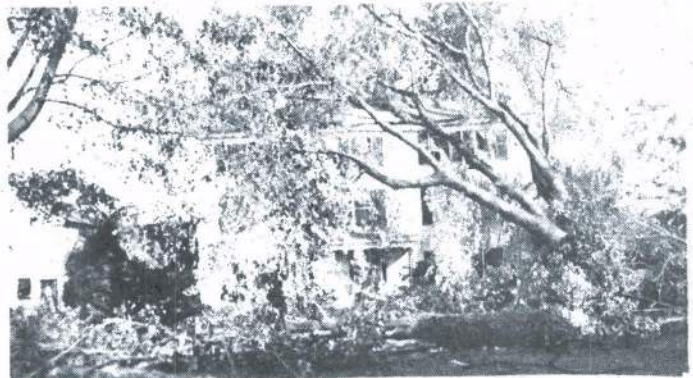
SEVERE DAMAGE was done to the Fletcher's home at Chamberlain corner during the hurricane blast which hit Westford in 1938.

(Photo courtesy Mae E. Day)

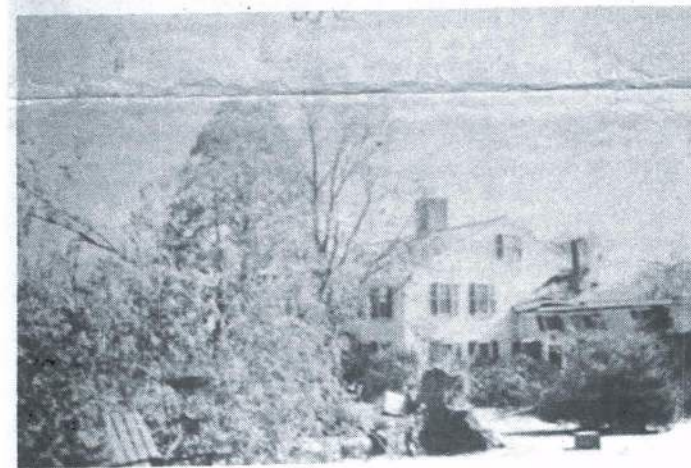


FORMERLY the home of the Stapels', this home, with the barn leveled in the hurricane of 1938, is presently the home of the George C. Swanton's.

(Photo courtesy Mae E. Day)



THE HURRICANE gave quarter to none: Miss Winnes's on Main St. (Photo courtesy Mae E. Day)



THE KIMBALL FARM on route 110 was nearly 50% destroyed in the '38 hurricane.

(Photo courtesy Mae E. Day)



This huge tree toppled like so much kindling.

(Photo courtesy Mae E. Day)



LOOKING AT THE COMMON in front of the library, immediately after the 1938 hurricane.

(Photo courtesy Mae E. Day)

The Hurricane of 1938 left its imprint around the Westford Common. In addition to the steeple of the Town Hall which toppled right across Main St., many stately trees were damaged and buildings ruined.

Since this is the hurricane season, it might be interesting to reminisce about the '38 storm.

Kimball's Ice cream stand, a view of Chamberlain's Corner and Minot's corner are featured.