

# Westford Recollections 250th Anniversary Series 1729-1979

By JUNE W. KENNEDY

Several reasons prompted the printing of a second WESTFORD RECOLLECTIONS series. First, a Town Anniversary is upon us. Almost 250 years have passed since the West Precinct of Chelmsford separated to become incorporated as the town of "Westford" in 1729. While Edwin R. Hodgman's scholarly History of Westford 1659-1883 chronicles the early events of this territory and town, a period of 95 years has now elapsed without a compilation of the lifeblood of this community. An update is in order!

Secondly, an innate love of history and feeling for this town sparked my first series of WESTFORD RECOLLECTIONS which appeared regularly for several years in "The Westford Eagle." Acquaintance with old photographs, documents and diaries became dividends of that venture and continued during the pleasant, more recent experience of personally interviewing and/or taping numbers of life-long and key townspeople. It was the oral history that made me realize it's the human experience that paints the real self-portrait of a town. And, it seemed to

me that the wealth of local history I possessed

warranted a permanent sharing. With the writing of this 250th Anniversary series, it has been my pleasure to do so.

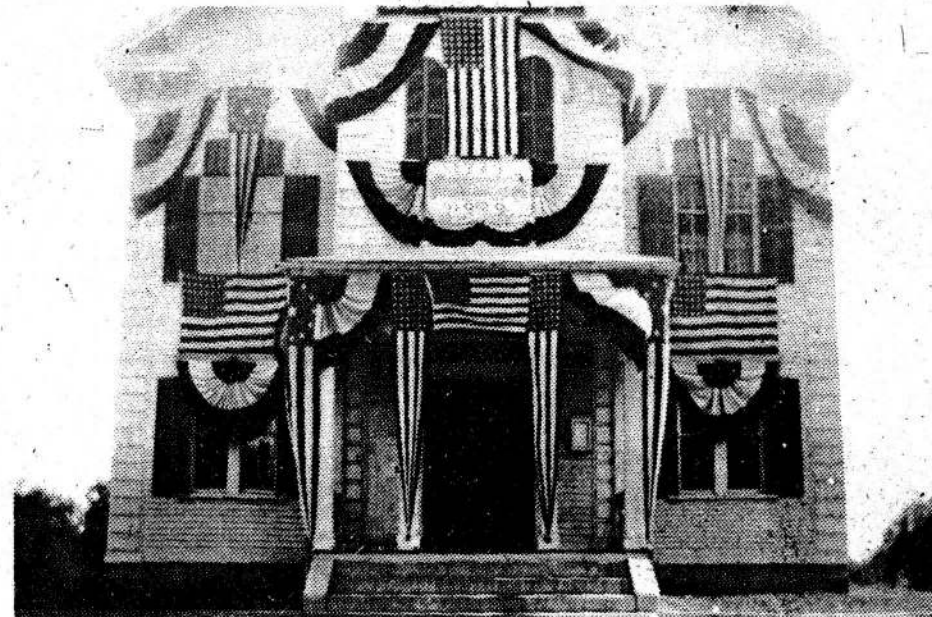
Third, it is my purpose in assembling this collection that it be useful to the average person, making him or her informed, knowledgeable and proud of Westford...add cause to the 250th Anniversary Celebration. Many requests suggested the need for the section I've titled "Guide For the Tourist and You." It combines brief commentary on 75 selected historic landmarks, with a map depicting their location. This portion will appear in early spring. Designed for school, scout and organizational tours, cyclists and motorists, the "Guide" will also serve the needs of the arm-chair traveler.

Finally, for those whose appetites are whetted, a few installments will feature a resource section including bibliography, maps, town charter, etc. A complete record of the many people who contributed to the WESTFORD RECOLLEC-

TIONS tape library - and the subject matter - will also be listed. Presently, a laminated portfolio of WESTFORD RECOLLECTION articles which appeared in "The Westford Eagle" from 1970-1975 is on file at the J.V. Fletcher Library. I am grateful to Allister MacDougall for the loan of both printed and photographic material which helped to make possible much of that first series.

Several individuals made outright gifts to me of old Westford photos. Many granted me permission to reproduce photos from their collection for my own WESTFORD RECOLLECTIONS series. In a future issue, they will be recognized. I especially acknowledge Richard Hall who helped with the photocopying. Together we duplicated an extensive slide collection. It is my hope that copies of WESTFORD RECOLLECTIONS printed and taped material, historical slides and photographs, will some day be housed at the Town Museum and at the J.V. Fletcher Library.

Aside from the tour guide (which spans a broad sweep of Westford's history), I should



A 250th Town Anniversary is upon us! The Westford Town Hall was one of many buildings decked out in bunting for the historic 200th Anniversary in 1929. (WESTFORD RECOLLECTIONS Series)

state that my goal in this current series was capturing the overall flavor and lifestyle of our town during the turn-of-the-century years. I've sought to convey plain everyday living at the crossroads. Emphasis is on life experiences, needs and meeting places common to all. As nearly as was possible to document, material in each section appears in chronological sequence. While general historical background is given on schools, stores, transportation, etc., in many instances I've drawn largely upon diaries and live conversations, for who better than the storekeeper, the teamster or the schoolmarm, herself, can tell the real story of those days. I should state, too, that this series is meant to be folksy and entertaining. I hope that many of you will clip and save the articles.

As you browse through this collection during the next ten months, detect the strong throbbing pulse which animated and shaped the character of Westford. May it beat in you also!

250th Anniversary 1729-1979  
Westford, Massachusetts

# The Westford Eagle